

# Creating a Geotiff using TatumGIS Viewer

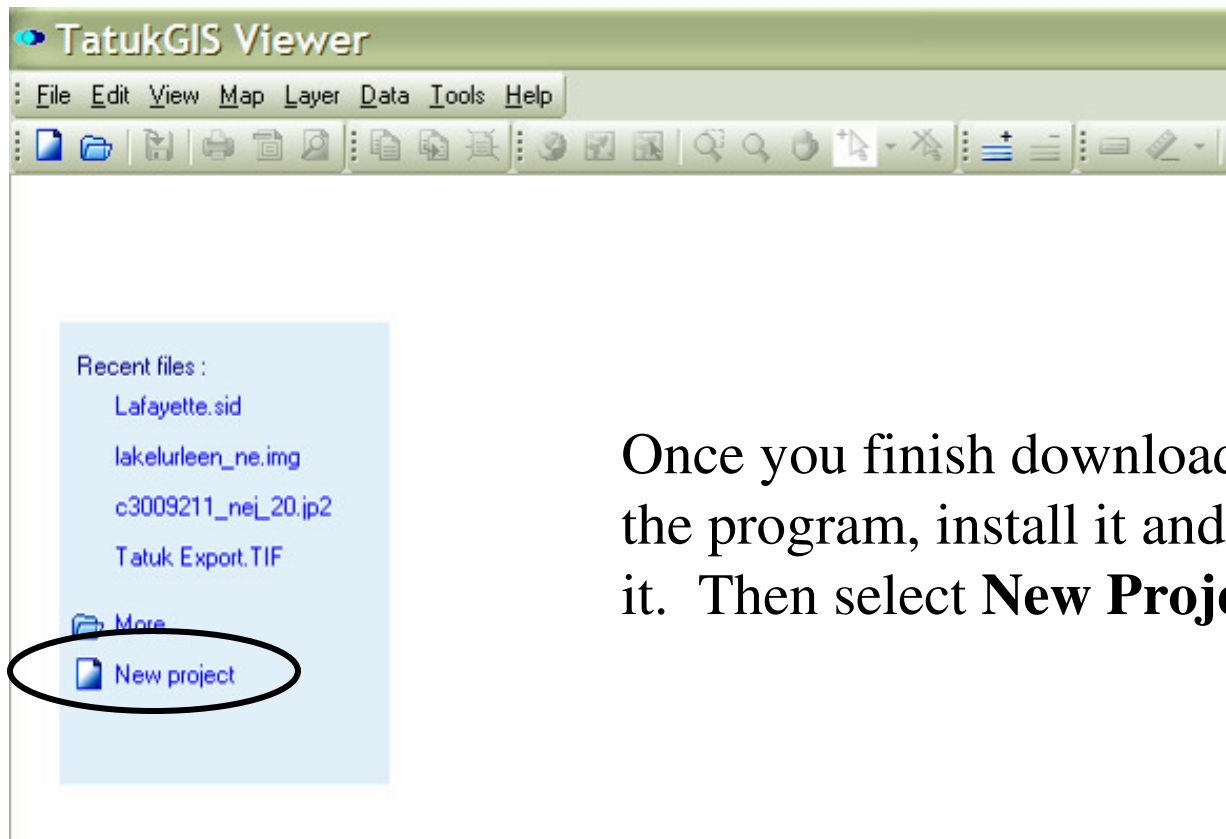
## Step #1 – Load the Program

Your first step is get the TatumGIS Viewer program running on your computer by either installing it from your customer CD or downloading it from the LandMark website under Support > Software Updates.



# Creating a Geotiff using TatukGIS Viewer

## Step #2 – Open the Program

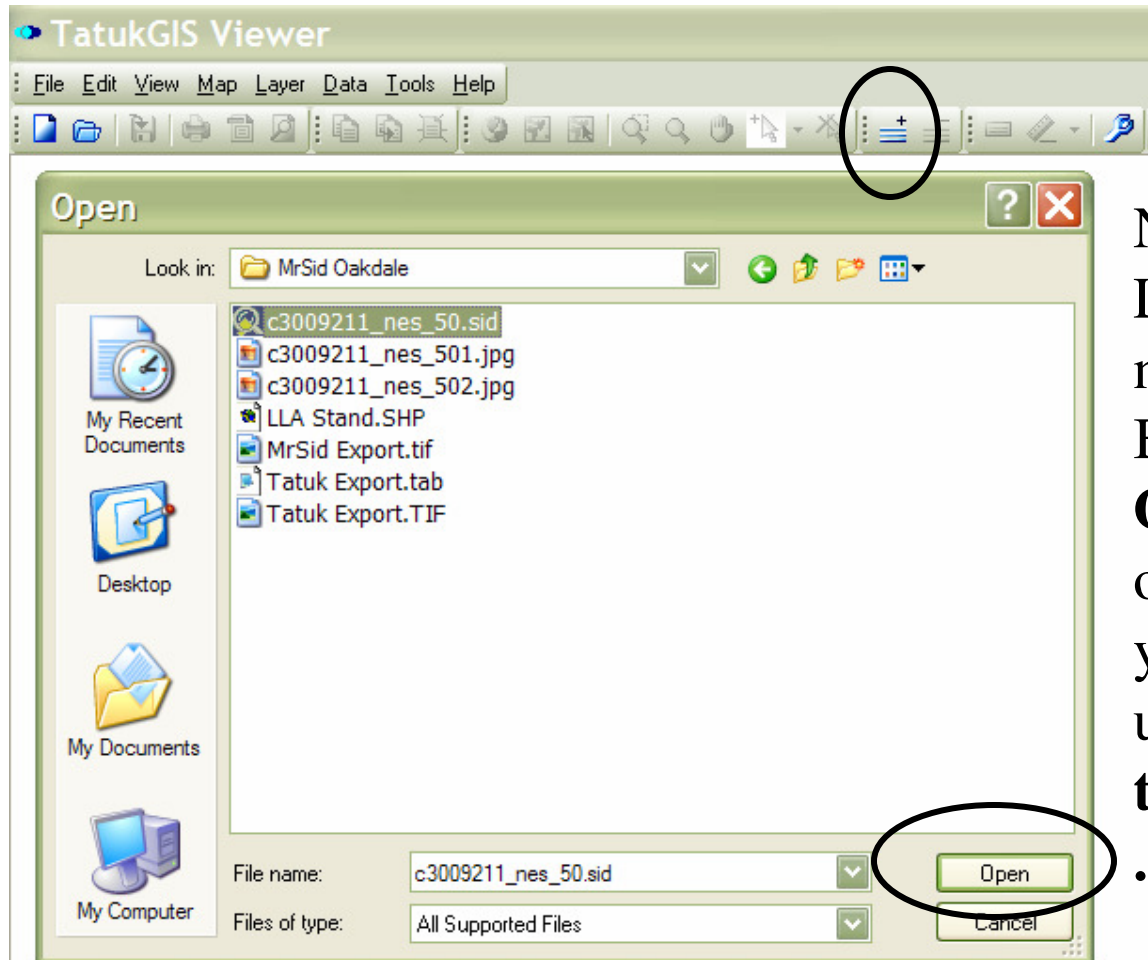


Once you finish downloading the program, install it and open it. Then select **New Project**.



# Creating a Geotiff using TatukGIS Viewer

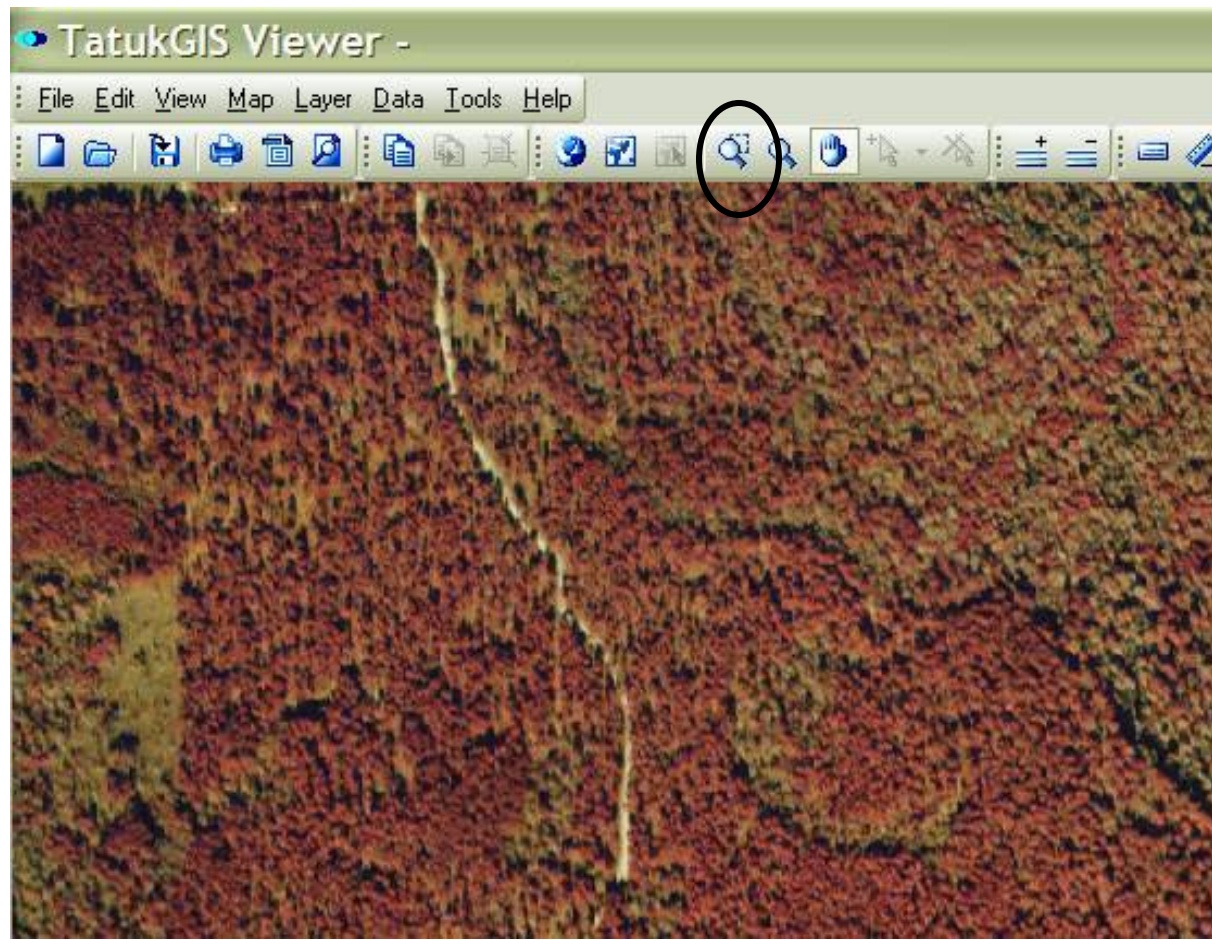
## Step #3 – Open your Photo or Topo



Next, click the Add Layer button and navigate to your Basemaps folder and **Open** one your DRG or DOQQ files that you downloaded and unzipped. **The file type can be .sid, .tif, .img, or .jp2.**

# Creating a Geotiff using TatukGIS Viewer

## Step #4 – Zoom to Stand Boundary

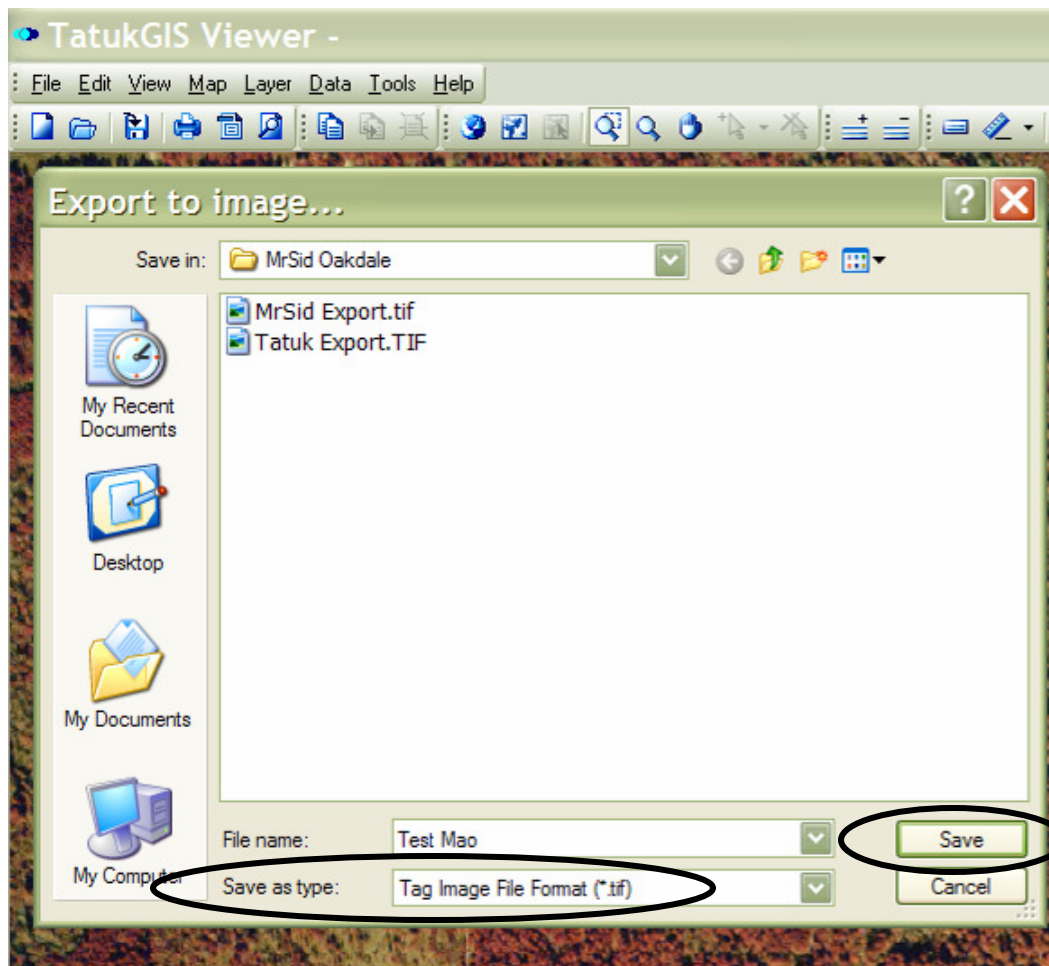


Next, click the **Zoom Window** button and draw a box around the area you want to export.

NOTE: the smaller the area, the more efficiently you will be able to zoom in and out in Solo Forest.

# Creating a Geotiff using TatukGIS Viewer

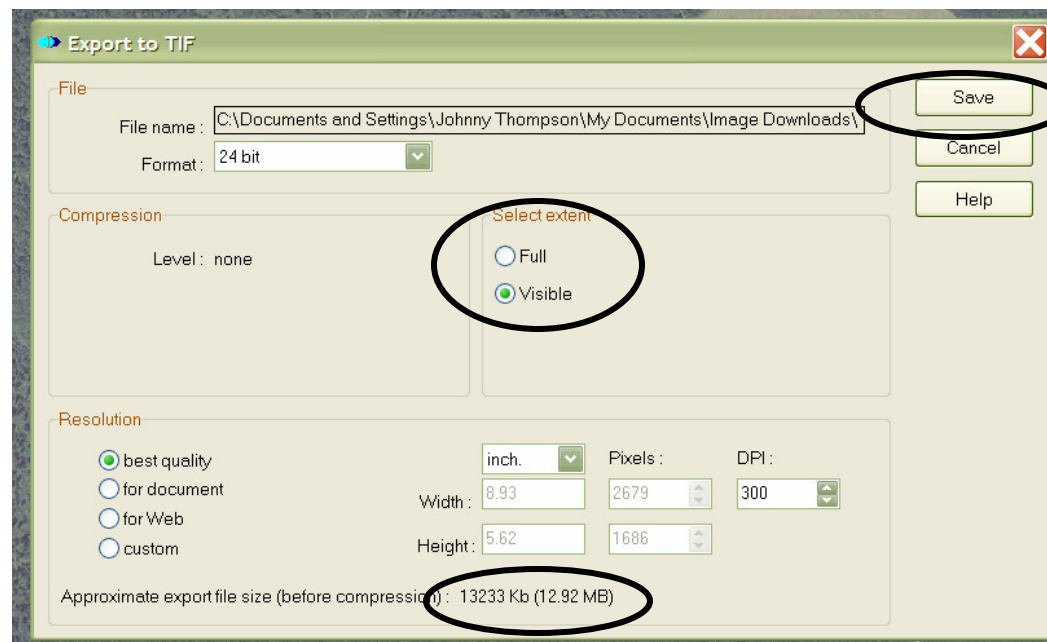
## Step #5 – Export the Image



Next, click File > Export to Image and then select the directory (if different), name the file, and select **“Tag Image File Format (\*.tif)”** as the type and **Save** it.

# Creating a Geotiff using TatumGIS Viewer

## Step #6 – Save the Image



Lastly, Select the Visible extent and then make sure the file size is < 20 MG so that it will be usable in Solo Forest. When you select **Save**, you will have created 3 files; a .tab, a .tif, and a .tfw. You will need to transfer the .tif and the .tfw to your handheld for use in Solo Forest.