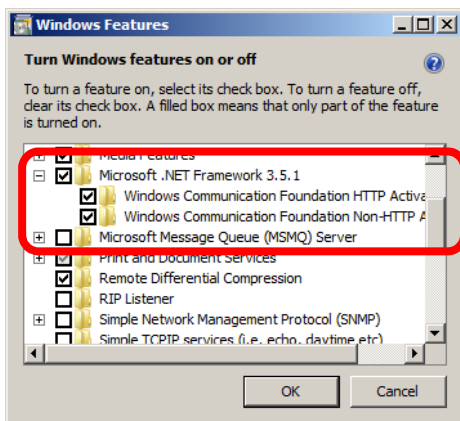


Connecting Your Windows Mobile Device to Your PC

Users will need to be familiar with the procedures for connecting their Windows Mobile handheld device to the PC for file transfer and software installs/updates. All Windows Mobile handhelds come pre-loaded with connectivity software called ActiveSync. Your desktop PC will also need software which most often is not pre-installed. Newer Windows PC's use an application called Windows Mobile Device Center (WMDC) to facilitate the connection. This program has replaced ActiveSync which was used on Windows XP and older operating systems.

Windows 8 and 10 users will need to enable .NET Framework 3.5 in Control Panel before installing WMDC. Open Control Panel choose *Programs and Features > Turn Windows Features On or Off*. Expand the section Microsoft .NET Framework 3.5 and check all components as shown here and OK out.

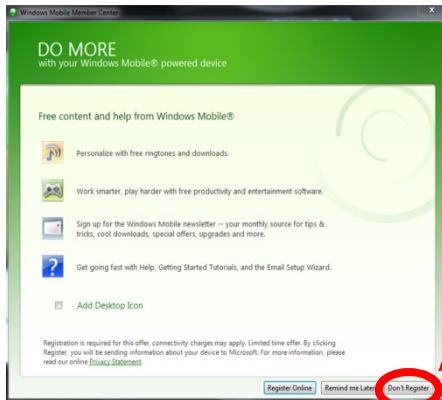
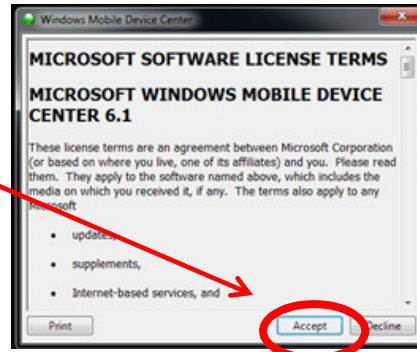


Windows Mobile Device Center installers are located on the LandMark Spatial Solutions website (www.landmarkhelp.com) under **Support > Software Downloads > Mobile Device to PC Connection Utilities**. Download the appropriate installer (32 or 64 bit) to your PC. If you are unsure which you have you can click *Start > right click Computer and choose Properties*. The PC specs will be displayed. When installing the WMDC application, right click on the installer named ***Windows_Mobile_Device_Center_xxbit_Setup.exe*** and choose ***Run as Administrator***.

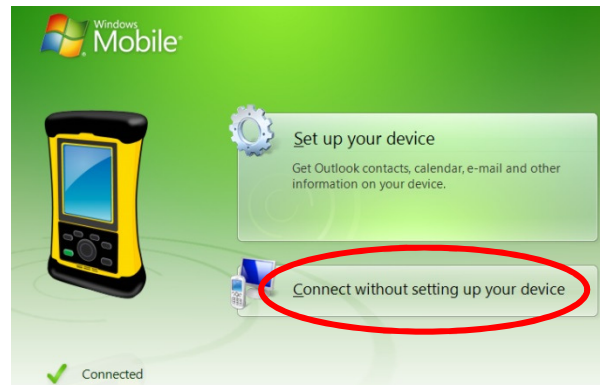
Next, run the ***WMDC-Helper*** utility located on the same webpage as the installers mentioned above. You will be prompted to restart your PC after this is completed.

Connecting for the first time with WMDC - The first time connection will take a little longer than usual as some new drivers will be installed. For Windows Mobile Device Center you will likely see the following dialog boxes:

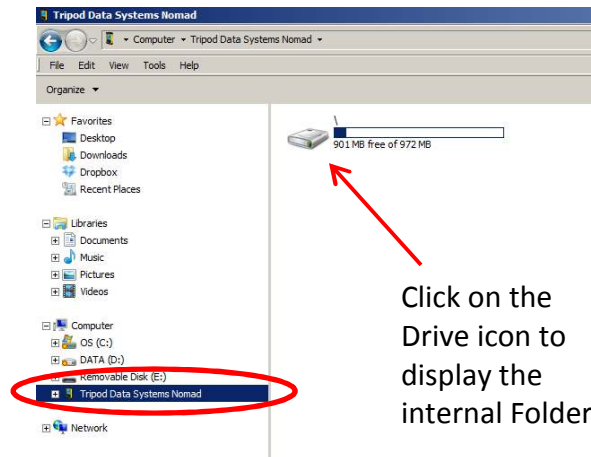
Wait for the Installing device driver software window to finish. Next, accept the license agreement.



Choose Don't Register on the DO MORE window as this is not required and not critical for install.

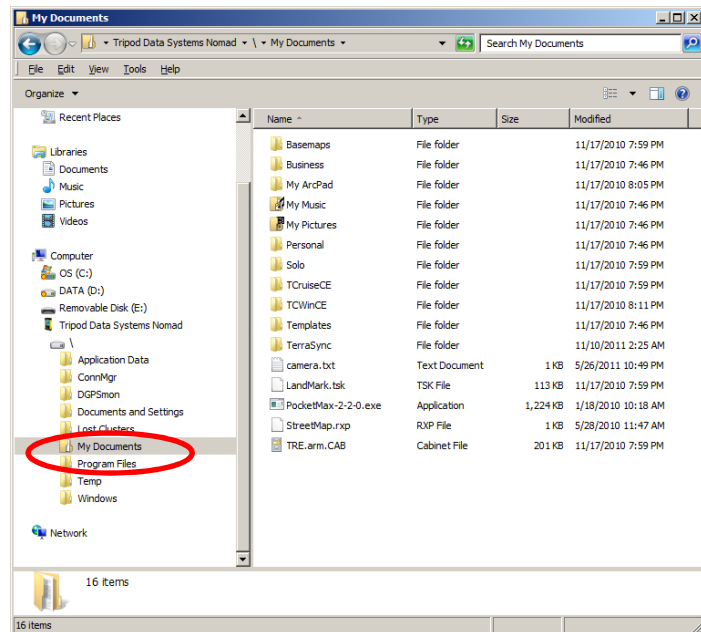


Once you are connected, you can select **File Management** > **Browse the contents of your device**. This will open Windows Explorer and display the Mobile Device as if it were a separate Drive on your PC.



Click on the Drive icon to display the internal Folders.

Notice that the Mobile Device has a folder named My Documents, just like your PC. There are subfolders here where most of your data will be stored. You can Cut, Copy, Paste, Delete, and Rename files here just like you do on the PC. Most often you will copy GPS and cruise files and paste them back to folders on your PC.



Important Mobile Device folder locations to remember:

My Documents\Basemaps folder – Aerial imagery, Topo's, and shapefiles to be used a background maps in SoloForest.

My Documents\Solo folder – Solo UDF projects (GPS data), Solo Feature Files, Custom Zone files.

My Documents\Solo\Exports – folder location where exported shapefiles from your GPS projects will be written to.

My Documents\TCruiseCE – folder storage location for **ALL** TCruise files on the Mobile Device.