

Digital Clinometers

Electronic results, better precision

EC II-D ^{NEW!} EC II D-R ^{NEW!}

INCLINATION + HEIGHT + DISTANCE CALCULATION



The Haglöf EC II is an easy to use field instrument that offers accurate measuring results on inclination and heights of objects, usually trees. With the help of a reference height on the measuring object, the EC II-D can calculate the distance to the tree. With electronic presentation of precision results, the EC II offers accurate measurements without calibration or maintenance.



Art. no 15-102-1019 EC II-D Clinometer. Specify model on order as Feet/degrees; Feet/Percent; Meter/Degrees; Meter/Percent. Delivered with lanyard and instructions.

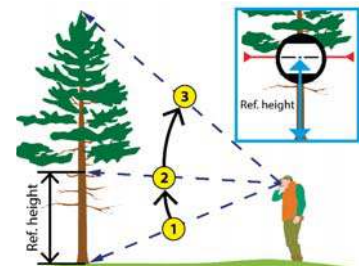
INCLINATION + HEIGHT + DISTANCE CALCULATION + BASAL AREA + VOLUME + FORM FACTOR



The EC II D-R is an electronic clinometer with factor gauge. Use the EC II D-R for height readings and estimates of basal area. The EC II D-R uses a reference height to calculate the distance to the object and has adjustable form factors from 0.10...0.95 (default 0.45). Use the built-in basal area functions to count number of stems with selected basal area factor (0.5,1.2,4 or 5,10,20,40). The EC II D-R will display a calculation of the basal area and a volume estimate based on dominant tree height or average height.



Art. no 15-102-1020 EC II D-R m/deg or m/%, ft/deg, ft/% (spec. unit on order). Delivered with lanyard and instructions.



Stand at a distance approximately as far away from the object and the object's height for best results. The reference height mark should be set at 2 meters/6feet.

EC II-D ELECTRONIC CLINOMETER

Size:	20 x 63 x 44 mm / 0,8 x 2,5 x 1,7 inch
Weight:	50 g/1,8 oz (incl. battery) EC... D-R: 60g/2oz
Battery:	1 x 1,5 AA alkaline. Warning when low.
Temperature:	Min -15° Max 45° C / Min 5 Max 113 F
Display:	LCD, Backlit
Buzzer:	Yes
Consumption:	15mW
Height:	Min 0 Max 999 m/ft Resolution: 0,1 m/ft < 100m/ft or 1m/ft > 100m/ft
Angle:	%/° (degrees), -55 °< angle <+85 °, Resolution: 0,1° Accuracy: +0,2°

EC II D-R

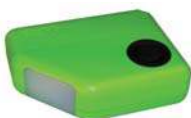
BAF:	0,5, 1, 2, 4 (m2/ha) or 5, 10, 20, 40 (Ft2/acre)
Factor:	0,10...0,95, default 0,45
Volume:	Height x form factor x basal area
Unit:	m3/ha or ft3/ac/1000
Chain:	Beaded metal extending to 60cm/24"

HCH

INCLINATION + HEIGHT + COMPASS

The HCH Compass with height function offers readings on inclination and heights from optional distance and placing in relation to the object's position in the field. Azimuth compass 0-360° graduated in 1° increments, and accuracy to <2,5°. Built-in magnetic declination. The HCC Clinometer Compass measures in degrees.

Art. no 15-102-1014 HCH Height clinometer compass. Specify model on order as Metric or Feet for height readings.



HCC

INCLINATION + COMPASS

Use the HCC to measure horizontal and vertical angles. Features azimuth compass 0-360° graduated in 1° increments, and accuracy to <2,5°. Built-in magnetic declination. The HCC Clinometer Compass measures in degrees.

Art. no 15-102-1013 HCC Clinometer compass.



C I

INCLINATION

The blue C I is the ideal instrument to measure inclination of trees, buildings, walls, tunnels, roads, etc. Any field pro will appreciate the simplicity and accuracy of the C I. Simply aim and press the button, and the angle is presented to you.

Art. no 15-102-1012 C I Clinometer. Specify model on order as Degrees or Percent.



HAGLÖF HCC/HCH/CI

Size:	20 x 63 x 44 mm / 0,8 x 2,5 x 1,7 inch
Weight:	50 g/1,8 oz (incl. battery)
Battery:	1 x 1,5 AA alkaline. Warning when low.
Temperature:	Min -15° Max 45° C / Min 5 Max 113 F
Display:	LCD, Backlit
Buzzer:	Yes
Consump.:	15mW
Angles:	%/° (degrees), -55 °< angle <+85 °, Resolution: 0,1°. Accuracy: +0,2° Typical.