

MAPSMART® FOR ANDROID FIELD DATA COLLECTION

- + Map with a Smart App
- + Bring Your Own Device
- + Store Heights and More
- + Integrate with GPS
- + Calculate Stockpile Volumes



www.lasertech.com

 **LASER_{TECH} TECHNOLOGY**
Measurably Superior®

MapSmart: Map, Measure and Position Smarter

The next generation of mapping is here. MapSmart on Android takes all of the sophisticated mathematics and technology required to collect reliable, professional field data and even calculate stockpile volumes as easy as using a smartphone app.



Bring Your Own Device

Run MapSmart on your Android device, use any LTI laser with wireless comm and import data into your CAD or GIS program including ArcGIS®.



Store Heights and More

Quickly and easily add attribute data including heights, spans, slope-grade and custom built notations to every data point you collect.



Map with a Smart App

Whether you are a novice or a GIS professional, MapSmart's workflow is as intuitive as any smartphone app with built-in help library.



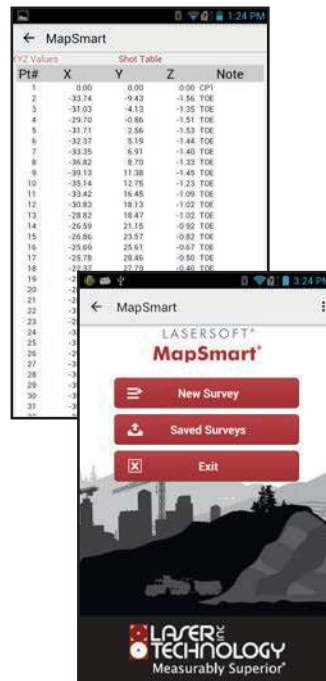
Integrate with GPS

Use the GPS data from your Android device's Location Services or pair your high accuracy GPS device for the most efficient way to map.

Improved Workflow Thanks to Android

Take advantage of all the benefits from smart device technology and embrace an easier way to map.

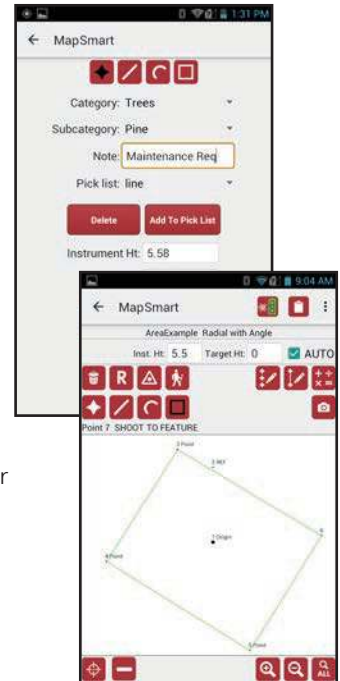
- Transfer your field data wirelessly and say goodbye to cables
- Automatically receive feature updates through Google Play
- Solve problems right in the field with built-in help and support



Map Point, Line and Area Features

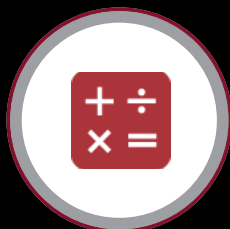
Keep your survey simple by using line, curve and shape features to better visualize your data as you map.

- Map and notate any individual point or group of points
- Transform a mapped feature type to any other feature type in two steps
- Draw an outline around irregular shapes using the area feature



REMOTE FIRE

Improve stability and targeting by using the laser's remote fire capability from your tablet.



FIELD CALCULATIONS

Make calculations right in the field that can eliminate the need for post-processing.



CAPTURE IMAGES

Include photos of your mapped features using the Android device or the TruPoint 300.

Real-Time Calculations

When time is money, you can't beat real-time data.

- Displays the measurement values between any two points or from a point to any line
- Calculates the perimeter and area of any boundary
- Generates a closure ratio to verify the accuracy of your traverse
- Report volume and tonnage data right in the field without any post-processing steps

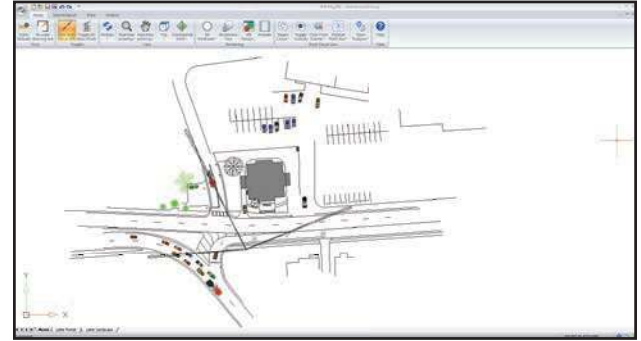


Report Formats

- GPS Exchange (*.gpx)
- Portable Document Format (*.pdf)
- CAD File (*.dxf)
- ASCII Plain Text (*.asc)
- Text Report (*.txt)
- Spreadsheet Report (*.csv)
- Raw Data (*.raw)
- Graphic Small (*.png)
- Graphic Large (*.png)

Field to Office Synergy

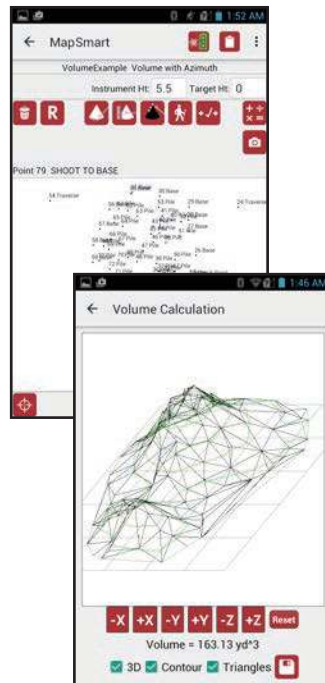
MapSmart reports can be transferred to any CAD-based software you already have. LTI does offer IMS Map360, a robust yet affordable desktop program.



Stockpile Volumes and Tonnage Data

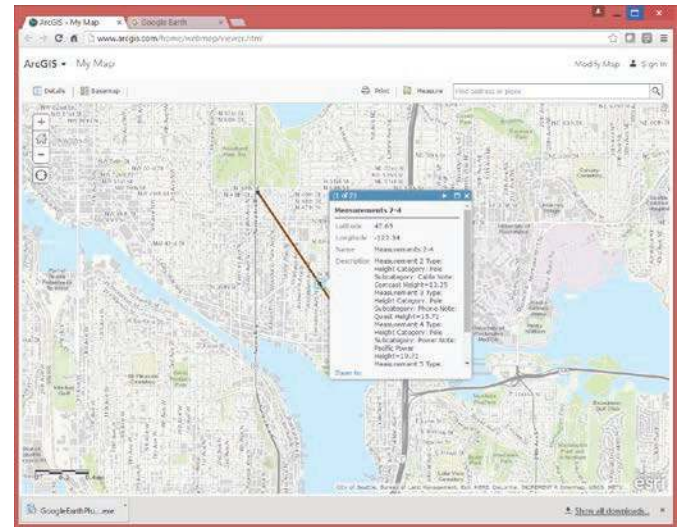
Easily measure and calculate the volume and tonnage of any material, even if it's stored in a bin or up against a wall.

- Eliminates guesswork, so you know exactly what you have on hand
- Measure as often as you want and stay in control of your own quantities
- Collects measurements from a safe location instead of requiring you to occupy loose and potentially dangerous material



Import Field Data Into Maps

MapSmart gives you the ability to export your georeferenced data and drop it into Esri's ArcGIS, Google Maps and other mapping applications.



REPOSITIONING

Easily pick up and move control points using a simple, step-by-step traverse routine.



GET A CLOSER LOOK

Choose touch zoom in/out and panning or simplified icons on those days when gloves are a must.



SAVE AND SEND

Eliminate cables to transfer your data and just simply email it all.

Popular Hardware Packages

TruPulse® 360R



TruPulse® 200X + TruAngle



TruPoint™ 300



Range	3,280 ft (1000 m)	6,233 ft (1900 m)	1,000 ft (300 m)
Range Accuracy	±1 ft (30 cm) Typical	±1.6 in (4 cm) Typical	±0.04 in (1 mm) Typical
Inclination Accuracy	± 0.25° Typical	± 0.1° Typical	± 0.1° Typical
Power	(1) CR123A Battery	(1) CR123A Battery and (2) AA	Li-ion rechargeable
Azimuth/Angle Accuracy	AZ ± 1° Typical	ANG ±0.05°	ANG ±0.1°
Communication	Bluetooth®	Bluetooth®	WLAN
Mapping Method	Radial with Azimuth	Radial with Angle	

MapSmart is also compatible with TruPulse 360 B

LTI Android Tablet Any 4.1 and newer Android tablet can run MapSmart



IP Rating	IP 67
Communication	Bluetooth and/or WLAN
GPS	10 to 16 ft (3 to 5 m)
Front/Rear Camera	2.0 MP/8.0 MP

MapSmart on Android Specifications

Operating Systems	Android version 4.1 and later
Connectivity	Bluetooth and/or WLAN
Compatible Lasers	TruPulse lasers with Bluetooth and the TruPoint 300
Supported Languages	English (a template is available for translation)