



Mavic 3 Enterprise Mapping Solution

The Mavic 3 Enterprise Series redefines industry standards for small commercial drones. With a mechanical shutter, a 56x zoom camera, and an RTK module for centimeter-level precision, the Mavic 3E brings mapping and mission efficiency to new heights. A thermal version is available for firefighting, search and rescue, inspection, and night operations. A multi-spectral version is available for those that want to detect crop stresses. The M3E features:

- **20 MP 4/3" CMOS Sensor with mechanical shutter**
- **56x Hybrid Zoom Camera**
- **DJI RC Pro controller with built-in screen**
- **45 min max flight time**
- **DJI Pilot 2 app now does Inspections and Mapping!**



LandMark Spatial Solutions offers a complete ready to fly DJI M3E Kits which offers the following:

- Mavic 3 Enterprise Drone
- 4 Intelligent Flight Batteries with Multi-Charger Station
- Rugged molded case
- DJI RC Pro Controller with built-in screen
- Extra set Propellers

Options:

- Centimeter level Positioning with RTK Module
- High-Volume Loudspeaker
- Mavic 3 Thermal Drone with 640x512 Thermal Camera and 48 MP Wide angle camera
- Mavic 3 Multi-Spectral Drone with four 5 MP cameras for NDVI creation to detect crop stresses
-
-



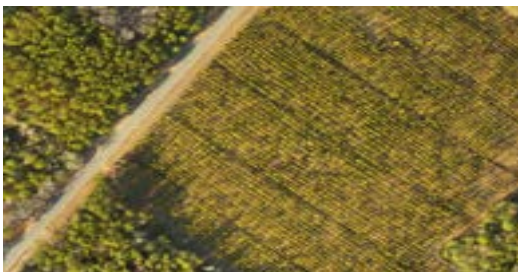
UAV Mapping Software

LandMark Spatial Solutions offers several different cloud-based subscription options for processing your mapping data. **Pix4D Cloud** is preferred if you need 3D Stockpile volume calculations. **Skylab Cloud** is best if you are only doing 2D flights and offers several subscription options to meet your budget and flight needs. If you only fly occasionally, **MapsMadeEasy** allows you to pay for processing on a flight-by-flight basis.

	Pix4DCloud	Skylab Cloud 	MapsMadeEasy
Pricing	\$590/yr + Credits per Flight	Starter = \$499/yr for 50 maps on up to 2500 A/yr Intermediate = \$1499/yr for unlimited maps on up to 10K A/yr Pro = \$2399/yr for unlimited maps on up to 20K A/yr	Pay-per-map or \$500 Annual License
Support	Extensive Online Video Collection 12 Month Email Support	Online Help Guide Support Contacts	Limited Online Help Guide

Pix4D Cloud and SkyLab Cloud

Mapping missions with the Mavic 3 Enterprise drones are now designed and flown in the DJI Flight 2 app. The collected images can then be uploaded to the the Pix4D or SkyLab Cloud servers after a flight and processed into highly precise, georeferenced 2D maps and 3D models (Pix 4D only). Results can be downloaded in a variety of resolutions and formats and then loaded into a GIS software for acreage determination. Skylab is best for forest stands and Pix 4D is best for 3D modeling and stockpile/logdeck volumes. Very easy and cost effective.



Orthomosaic



Volume Calculation

For more information, contact Johnny Thompson (662)769-5344/ jthompson@lmssmail.com) or Darian Yawn (886)-395-5440, x2/ dyawn@lmssmail.com).