



LANDMARK
Spatial Solutions, LLC

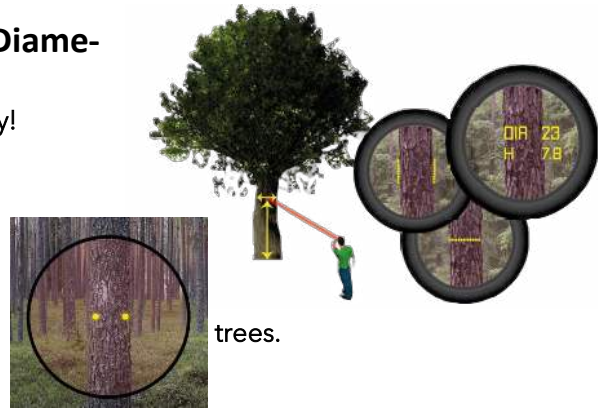
8-18-25

What's New from LMSS?

1. Haglof VL Geo 2—now with Remote Diameter and BAF Function



- Shoot remote DBH – up to 0.5" accuracy!
- Find upper stem diameter, then height!
- Set BAF, shoot tree and determine in/out from plot center.
- Rangefinder, Hypsometer, GPS, Compass.
- DME & Reverse Prism for borderline



2. Juniper Systems Archer 4 + Allegro Wireless Keyboard

- Game-Changer for GPS & tree data collection
- 6.3" Screen optimized for wet and cold
- IP 68 Rugged with 20 hr. battery
- Optional RTK GPS antenna
- Subfoot accuracy under canopy w/ NTRIP
- Allegro Wireless Keyboard with 200 hour battery



3. LTI TruPulse 360i



- Finally a good replacement for the Dependable TruPulse 360 Laser
- 50% more Horizontal and Vertical accuracy
- Side to Side Measurements with Internal TruVector Compass
- IP 67 Rugged
- Ultra-bright display
- 5X magnification

4. Drone Update:

- **DJI Mavic 3 Enterprise**—45 min battery, Inspections and Mapping, 56X zoom, Controller with Built-In screen, Mapping in DJI app, Mechanical Shutter and faster picture acquisition so more mapping per mission. Best Mapping drone in it's class. Options for Thermal and Multispectral



- **SkyLab**—Drone Orthophoto processing (\$500 to \$2400/yr), Tree and Seedling Counting (\$1.50/ac with min of \$1000), Change Detection from satellite data post-disaster, weed and disease classification.

- **ANZU Raptor & Raptor Thermal**—\$6150 or \$8750 Non-Chinese Version of the Mavic 3 Enterprise and Thermal Drones. USA Owned Company. Made in Malaysia. Uses ALOFT USA software. Great for Inspections and Mapping when you need a Non-Chinese drone.

Visit www.landmarkspatialsolutions.com or call 866-395-5440 for more info and pricing!

6. **Geode 3 Submeter GPS** —Looking for a simple sub-meter GNSS solution at an affordable price? With the Geode, you can easily collect real-time, sub-meter GNSS data without the huge price tag or complexity of other precision receivers. From \$1995 and up.

- **SCALABLE ACCURACY** – Collect precision multi-frequency, multi-constellation GNSS data at various accuracy levels, including 60 cm, 50 cm, 30 cm, 8 cm, and even 1-2 cm with RTK
- **WORLDWIDE CORRECTIONS** – Multiple correction sources provide precise, real-time data
- **COMPACT SIZE** – Small and lightweight for all-day use
- **OPEN INTERFACE** – Works with Juniper Systems' handhelds or your own device. Android, iOS, Windows, Windows Mobile.
- **SIMPLE TO USE** – Intuitive and easy operation, one-button simplicity
- **ALL-DAY BATTERY LIFE** – Ideal for long work days
- **WORKS GREAT UNDER CANOPY!** - 3" accuracy with Cell Connection and NTRIP!



7. Ez-Plot Toolbar now available for ArcGIS Pro -



- Allocates Plots in single or multiple polygons
- Select one or more stands
- Select plot distance units (feet, meters, chains)
- Control spacing between plots, rows, and columns
- Internal polygon buffer option
- Converts plots to Solo Waypoint files
- Spatial overlay tool that allows you to assign/reassign plot attribute/values based on the polygons in which they reside.



TCRUISE

8. **Next-Gen Inventory Solution**—Landmark Spatial Solutions partnered with **Woodland Solutions Group** in 2020 to be able to provide our clients with an **ESRI-based, cloud-based, Android-based solution** that provides GPS and Forest Inventory data collection in an easy-to-use format. You can start in ArcGIS, publish a feature service in ArcGIS Online, allocate plots in the WSG **InventoryManager** application, collect point, line, polygon, and plot/tree data in the field with **MobileMap**, and then sync that data back to ArcGIS Online. The plot and tree data can be exported out of Inventory Manager and imported directly into **TCruise Desktop** for compilation and reporting. This highly integrated tool is being used by small to medium to large forestry companies and agencies all around the country. Please contact us for a demo and pricing.



9. **Unita GPS Mapping Software**—Juniper Systems' Unita Mapping and Form Data Collection Software is a simple, yet highly customizable. You can be trained to use in an hour or less, but it allows you to create your own point, line, and polygon mapping features that can be shared and exported in a variety of industry standard formats. You can have maps streamed in or saved for offline use. Professional and simple all in the same package. Works with Windows and Android devices.



Visit www.landmarkspatialsolutions.com or call 866-395-5440 for more info and pricing!